

# neutrakon<sup>®</sup>

neutralisiert saure Kondensate



**Neutrakon Pro DBS – Dirt Basket Secure**  
Asselfingen

„Sauer ist nicht immer lustig“

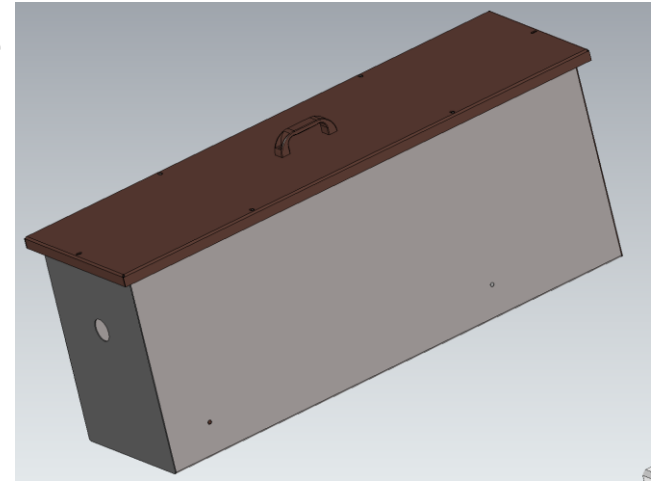
# Neutrakon Pro DBS – Why?



neutrakon®  
neutralisiert saure Kondensate

## Neutrakon Pro DBS (Dirt Basket Secure)

- Development of a simple system for the collection of dirt and dirt particles within non-pressurized systems. Made of V4A stainless steel, this system is a true multi-purpose champion!
- Reduction in susceptibility to faults by eliminating electronics or control elements.
- Suitable as a filter for heating systems, CHP plants, chimneys and industrial wastewater for upstream installation of condensate neutralization.
- Protection of pumps, lifting systems, conveying systems and other installed, downstream and sensitive systems.
- This product is characterized by easy and low-cost maintenance.



# Neutrakon Pro DBS – Why?

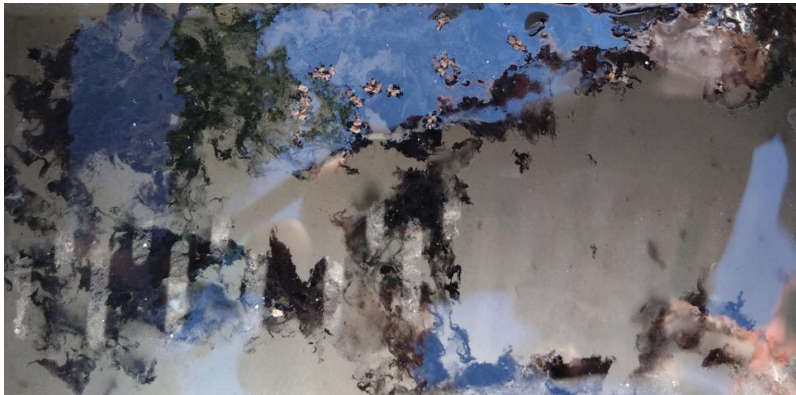


neutrakon®  
neutralisiert saure Kondensate

- 1 Sample condensate from CHP and chimney. Strong contamination from the smallest particles to floating tissue.



- 2 Sample condensate from CHP and chimney. Detail of floating tissue.



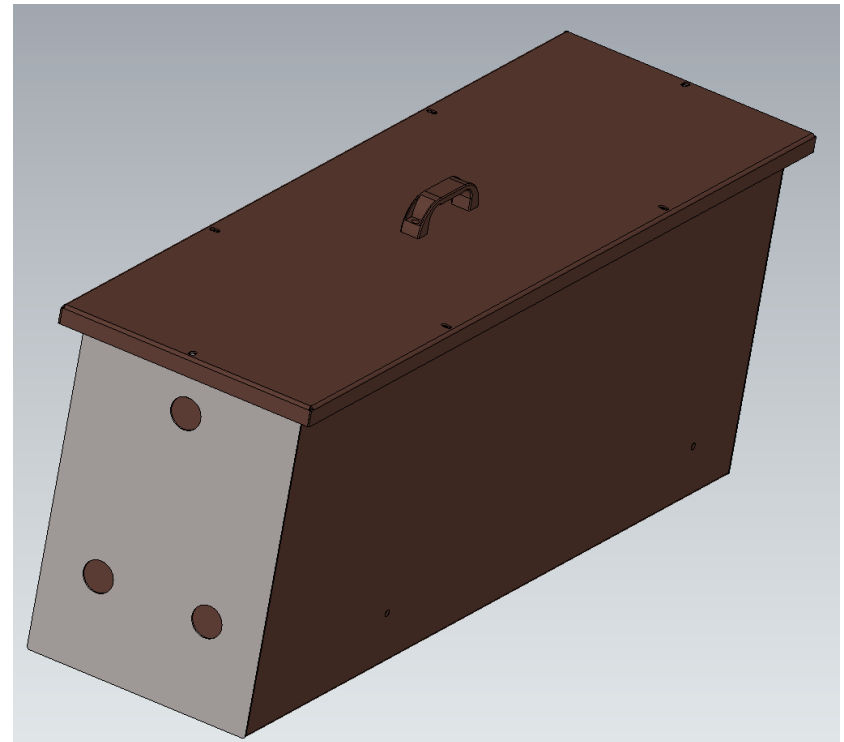
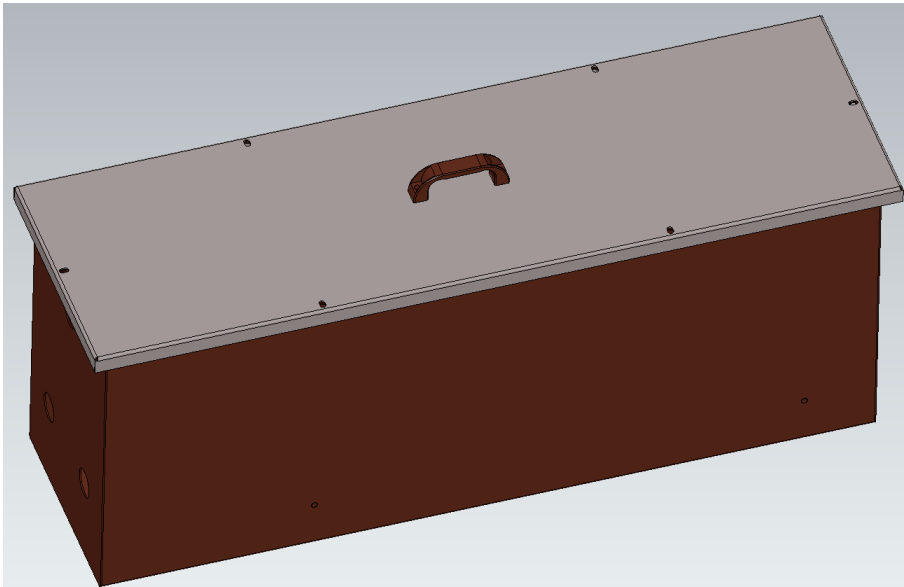
- 3 Fabric networks have erratic behavior. The accumulation and movement is random, hence the difficulty of collecting them.



# Neutrakon Pro DBS



neutrakon®  
neutralisiert saure Kondensate



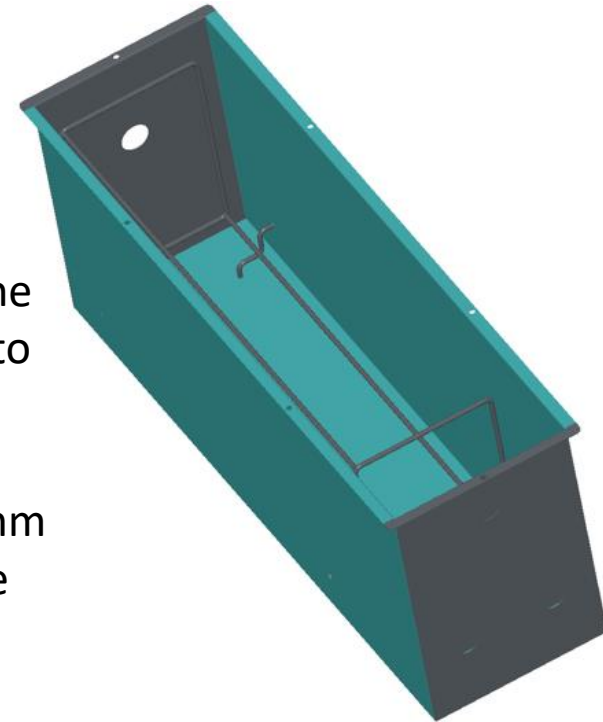
# Neutrakon Pro DBS – Concept



neutrakon®  
neutralisiert saure Kondensate

## Neutrakon Pro DBS – In Short:

- A frame is snapped into place within the housing.
- The frame is tensioned with a filter bag.
- The only opening on the filter bag is directly at the inlet of the housing. This means that the liquid and dirt enter directly into the filter bag.
- Because all 6 filter bag walls are at a distance of approx. 30mm from the housing wall, the water can flow out all around, the dirt remains trapped inside the filter bag.
- Depending on the dirt load, only the filter bag needs to be replaced.



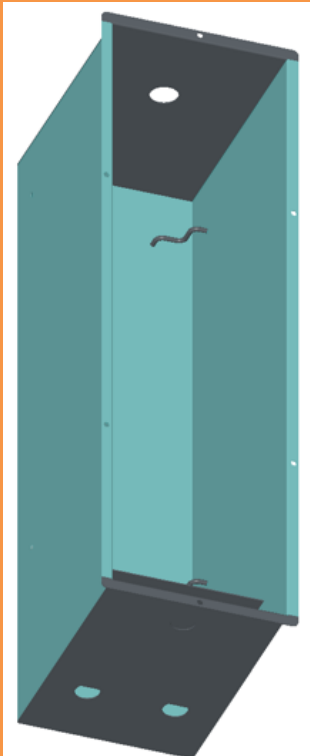
# Neutrakon Pro DBS - System



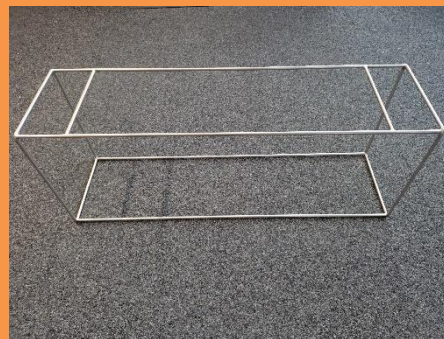
neutrakon®  
neutralisiert saure Kondensate

The Neutrakon Pro DBS consists of 3 components:

## Housing



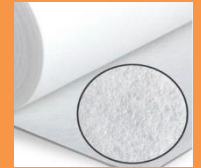
## Frame



## Filter bag



LD (100 g/m<sup>2</sup>)



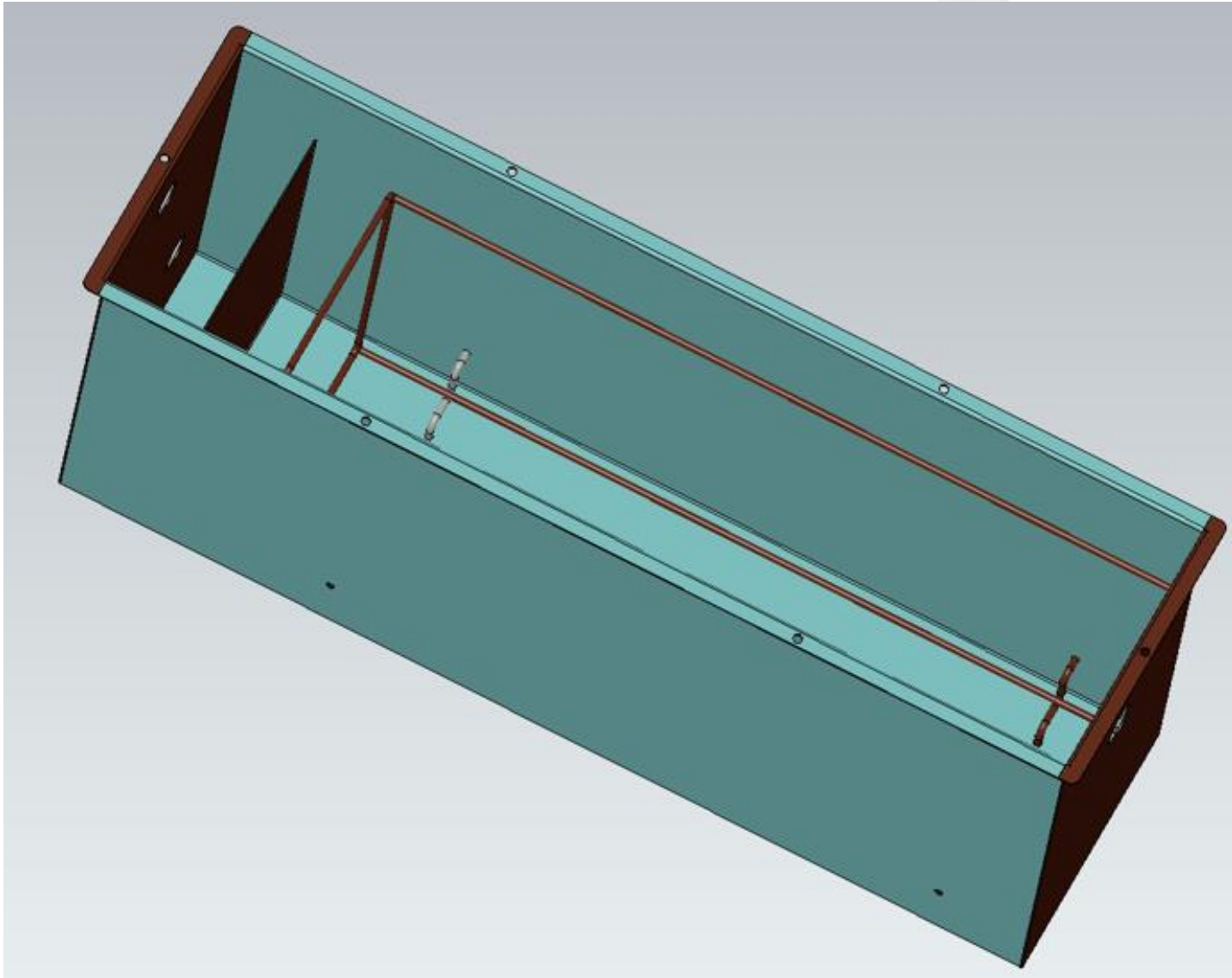
HD (130 g/m<sup>2</sup>)



# Neutrakon Pro DBS - Housing



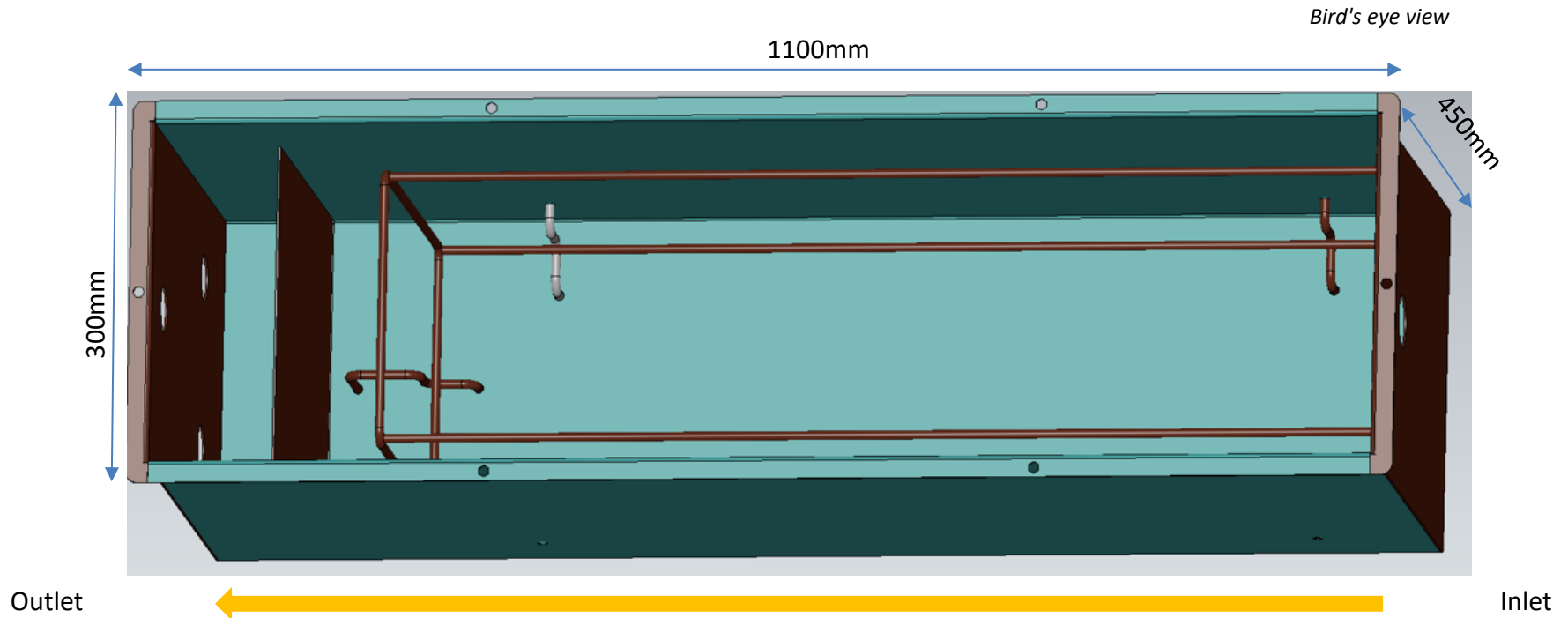
neutrakon®  
neutralisiert saure Kondensate



# Neutrakon Pro DBS - Housing



neutrakon®  
neutralisiert saure Kondensate

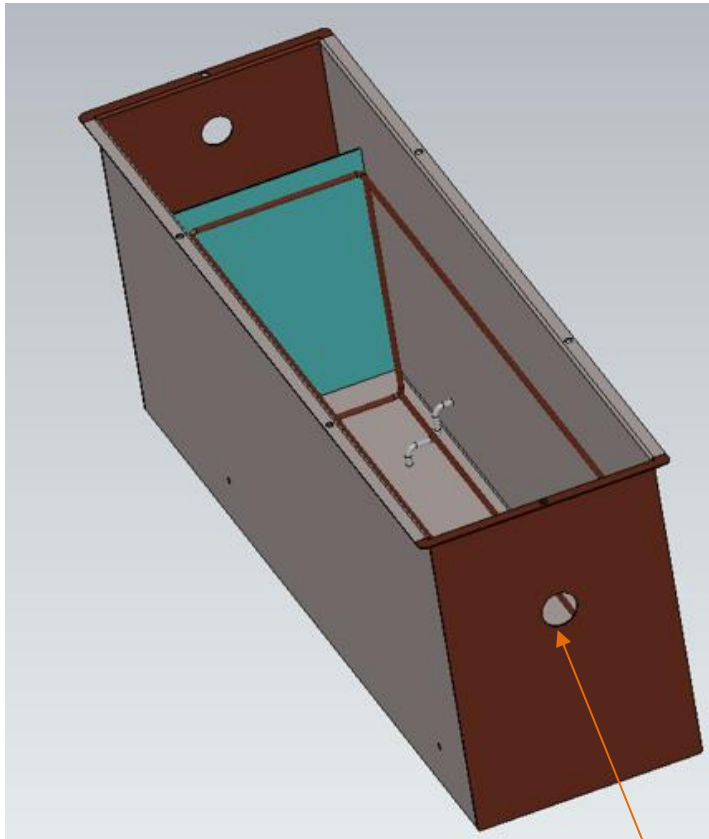




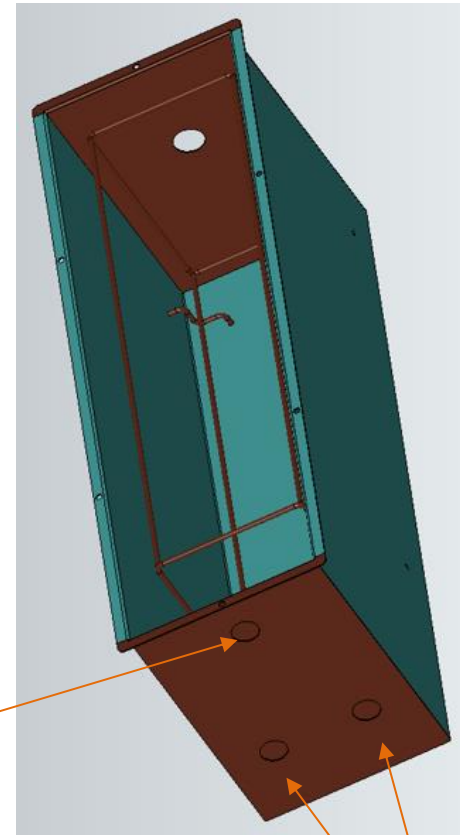
# Neutrakon Pro DBS - Housing



neutrakon®  
neutralisiert saure Kondensate



Inlet 1 ½"



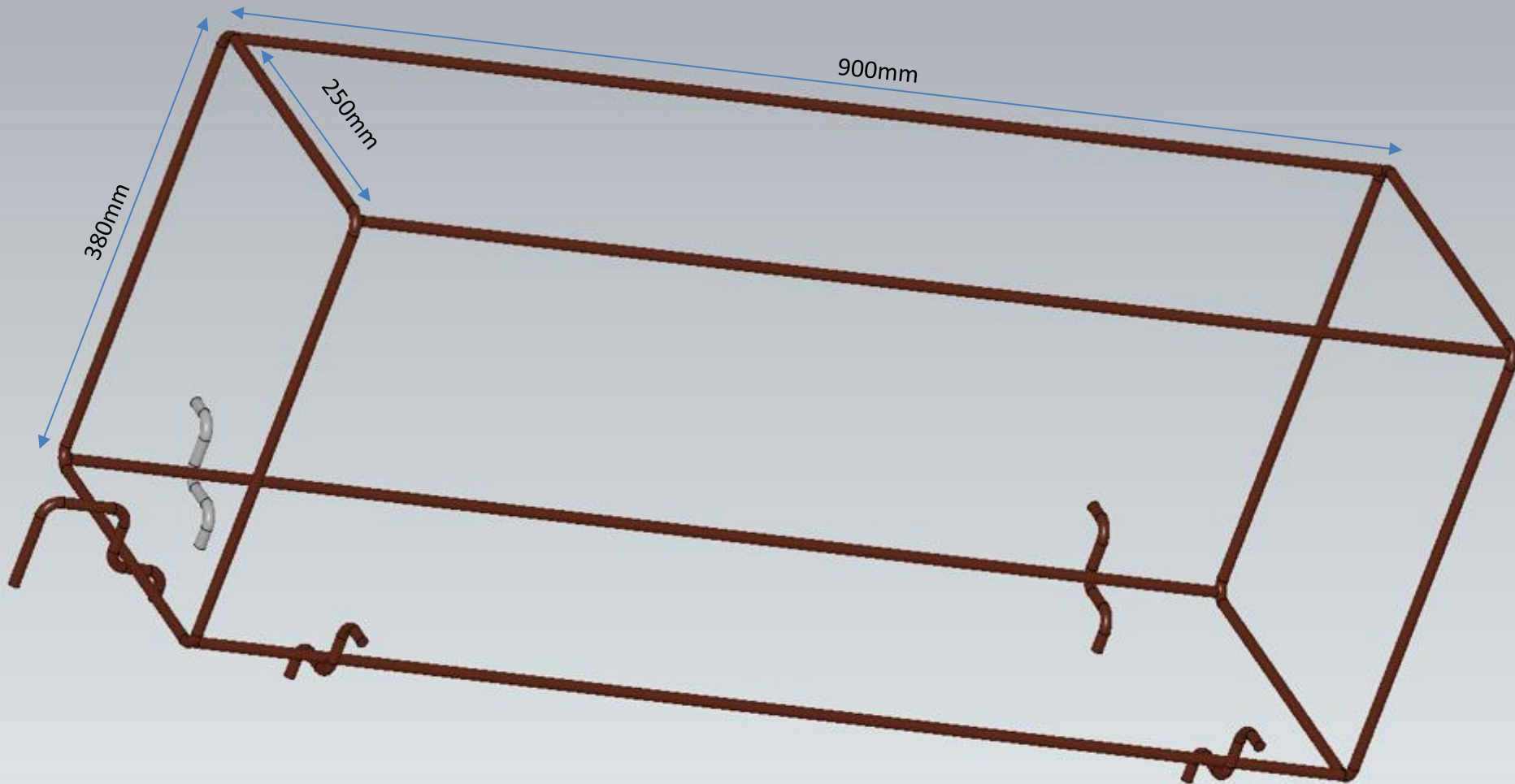
Emergency  
drain 1 ¼"

2x outlet 1 ½"

# Neutrakon Pro DBS - Frame



neutrakon®  
neutralisiert saure Kondensate

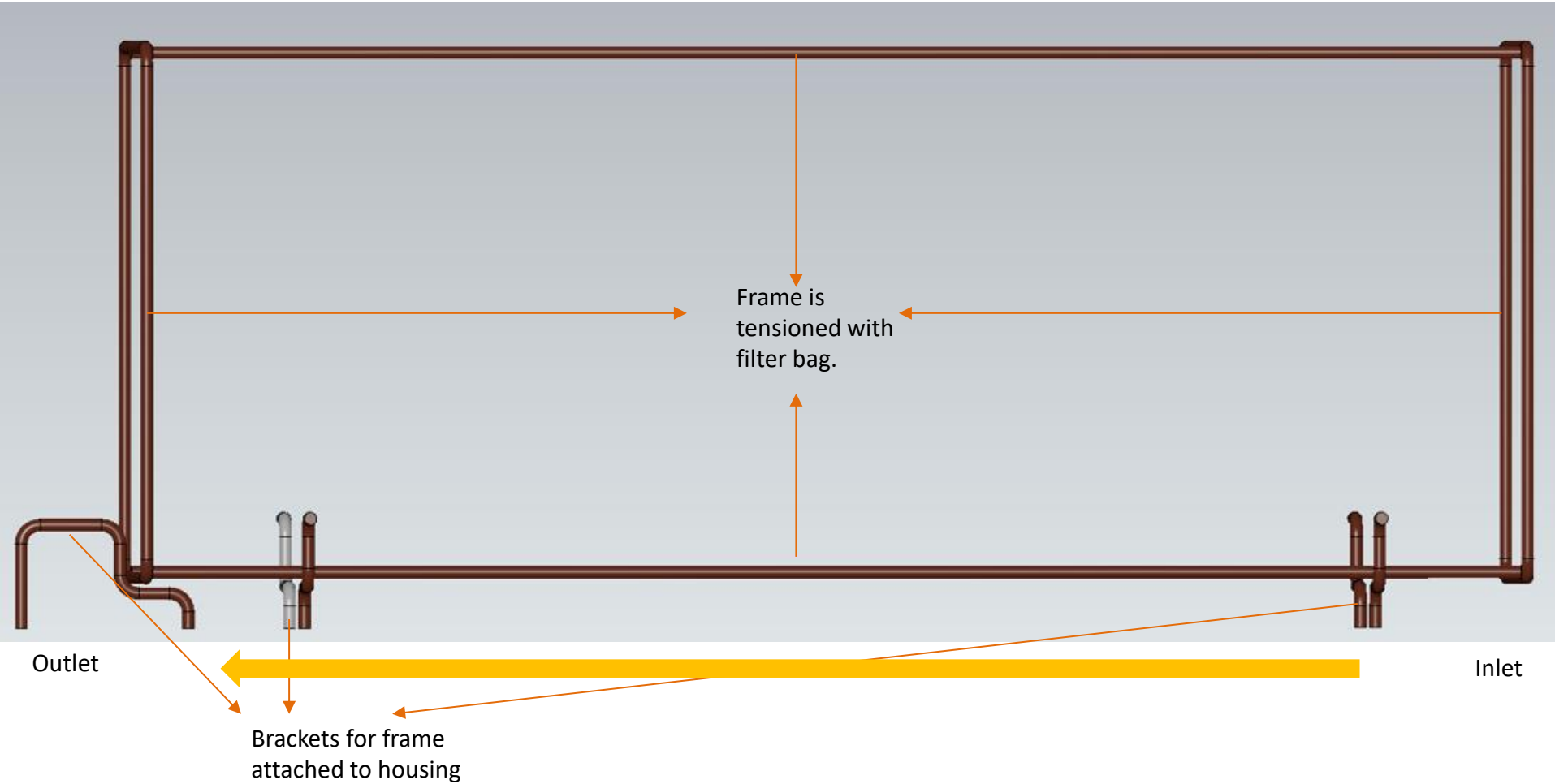


# Neutrakon Pro DBS - Frame



neutrakon®  
neutralisiert saure Kondensate

Side view

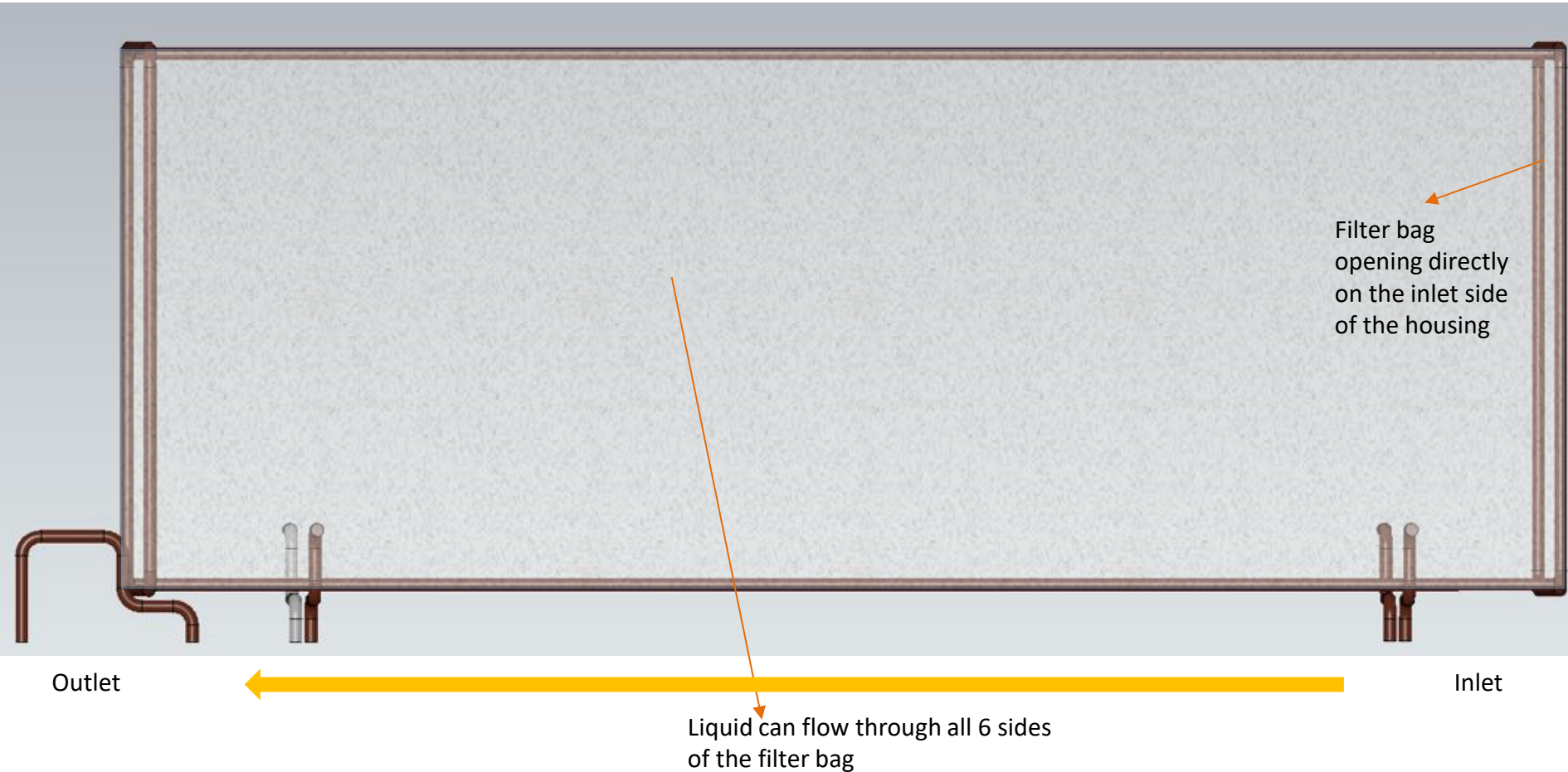


# Neutrakon Pro DBS – Filter bag



neutrakon®  
neutralisiert saure Kondensate

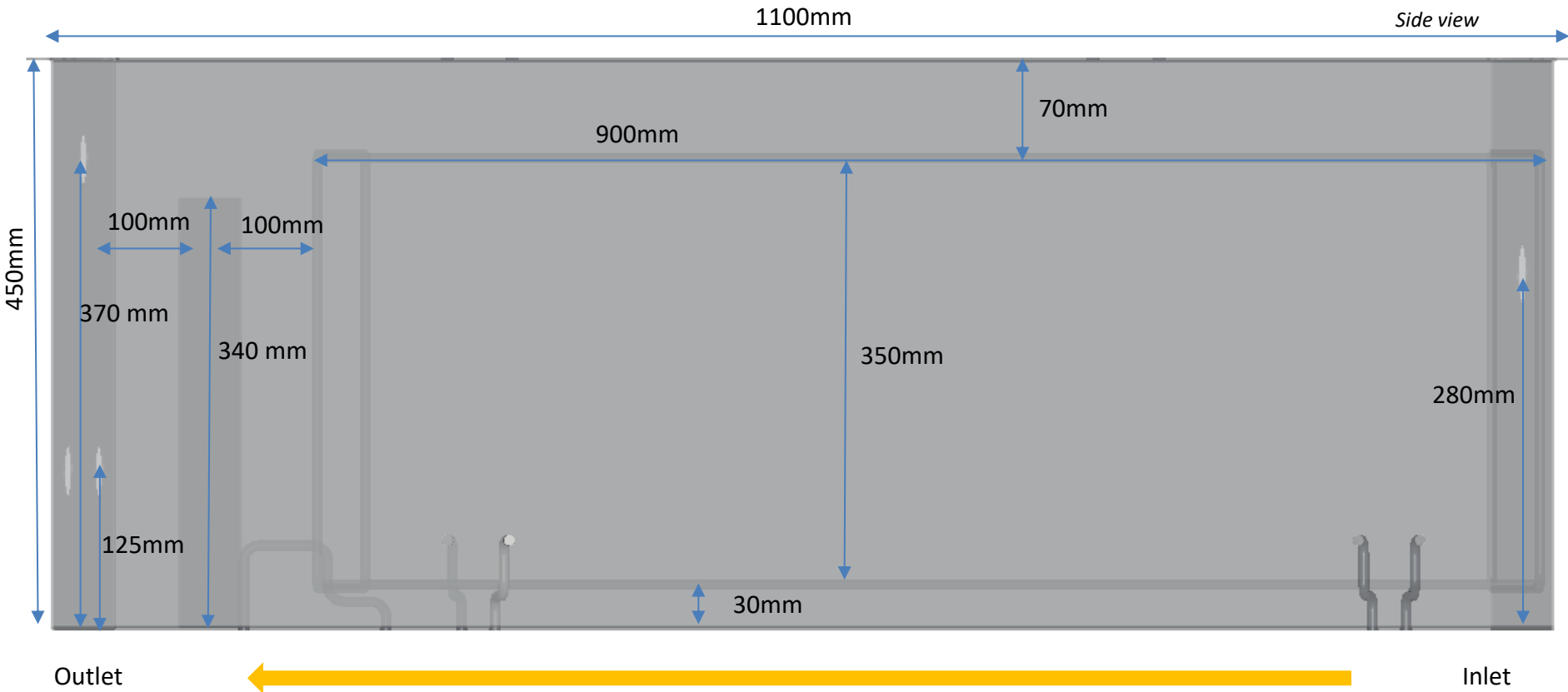
Side view



# Neutrakon Pro DBS - Dimensions



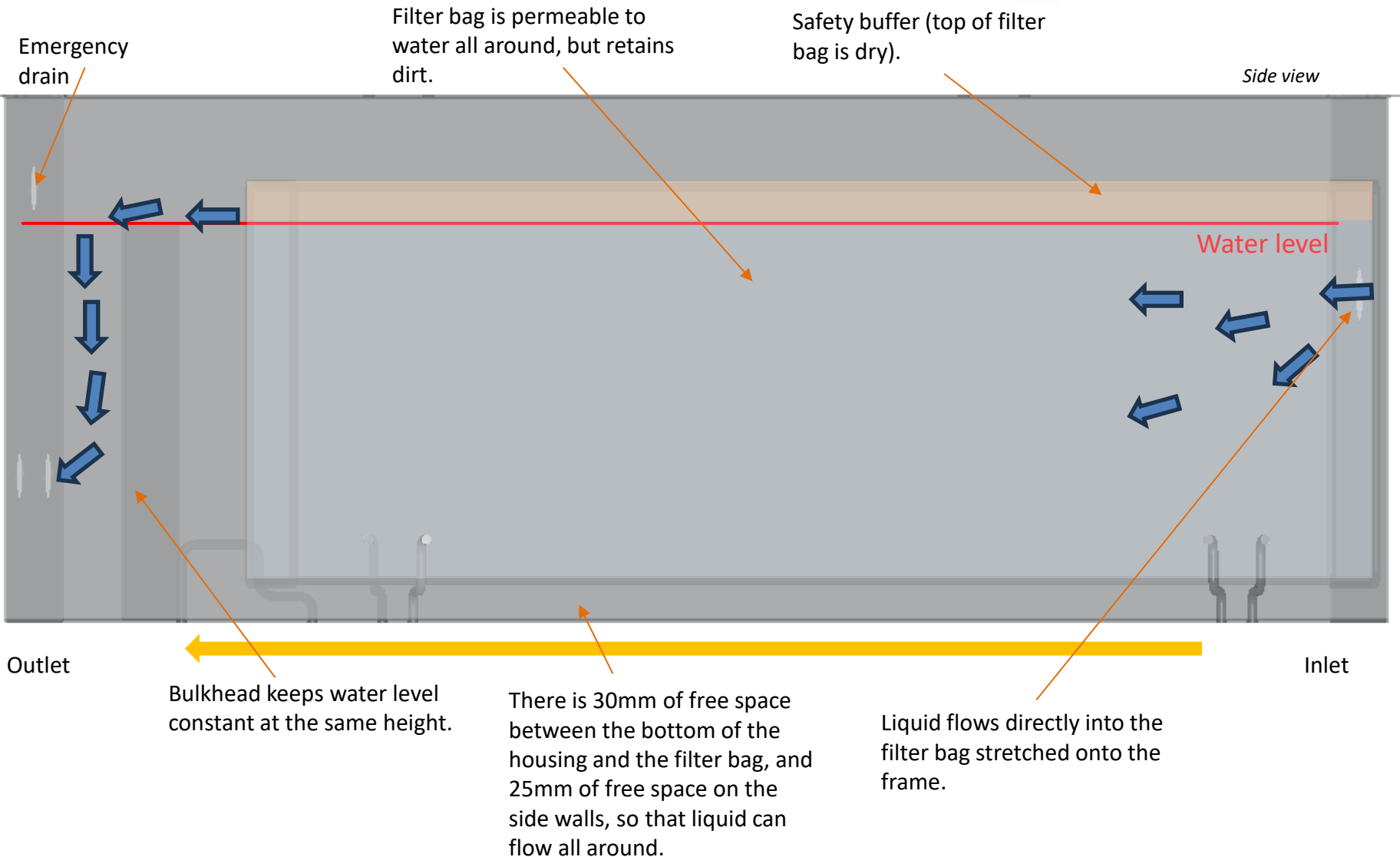
neutrakon®  
neutralisiert saure Kondensate



# Neutrakon Pro DBS - Function



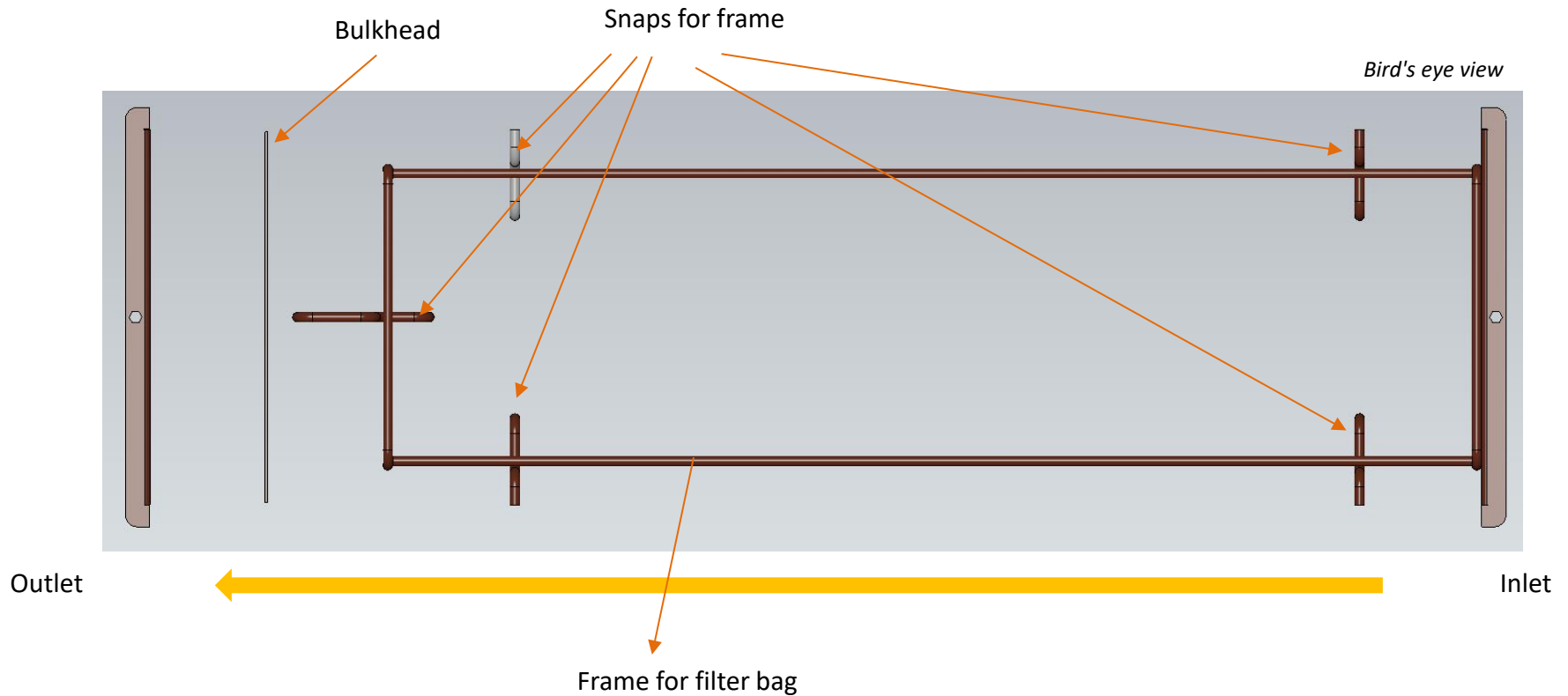
neutrakon®  
neutralisiert saure Kondensate



# Neutrakon Pro DBS - Function



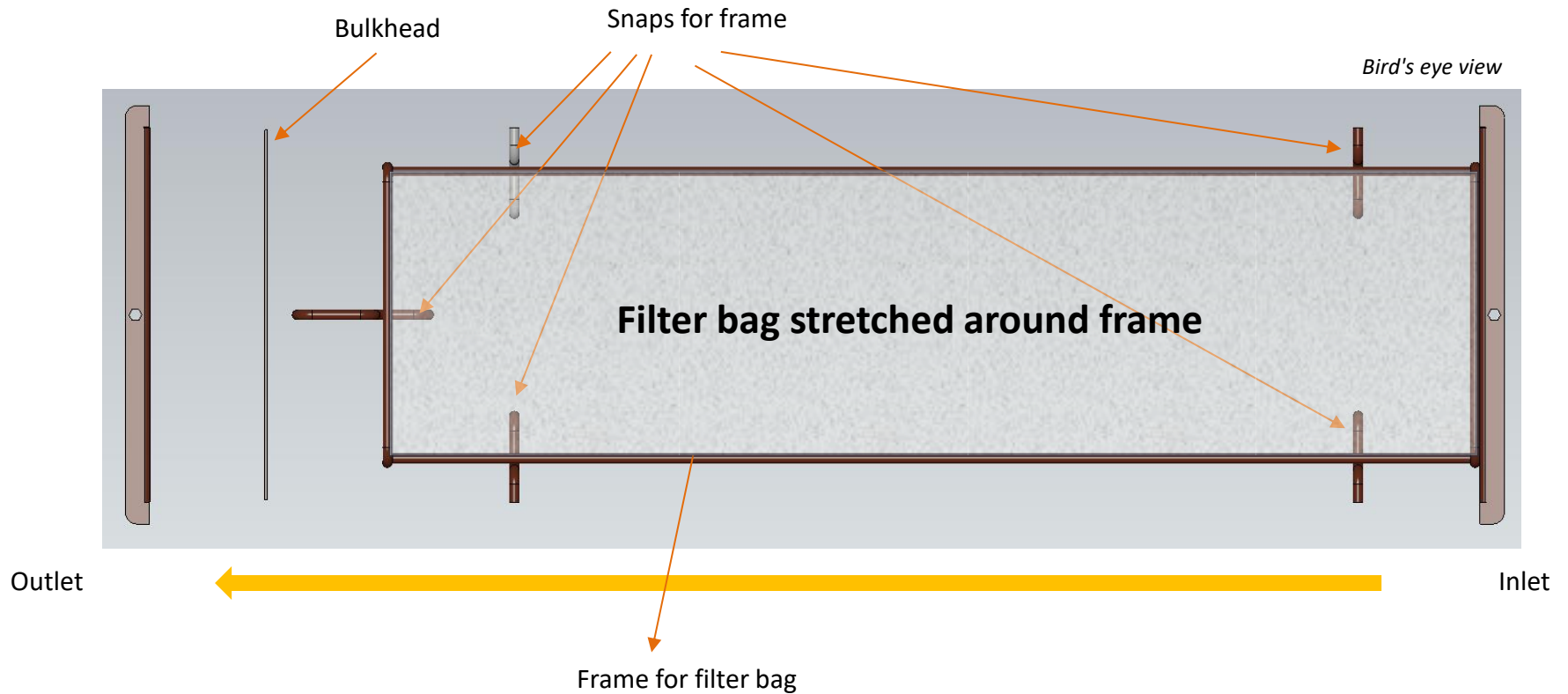
neutrakon®  
neutralisiert saure Kondensate



# Neutrakon Pro DBS - Function



neutrakon®  
neutralisiert saure Kondensate



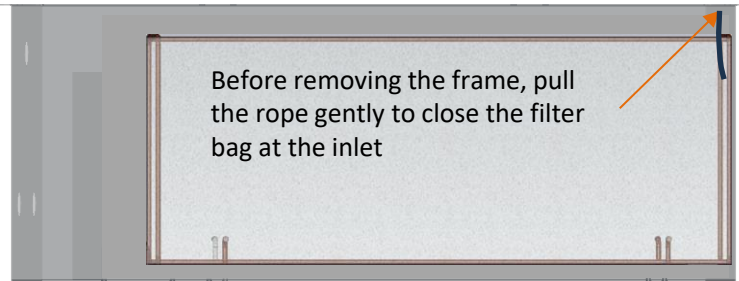


# Neutrakon Pro DBS - Function

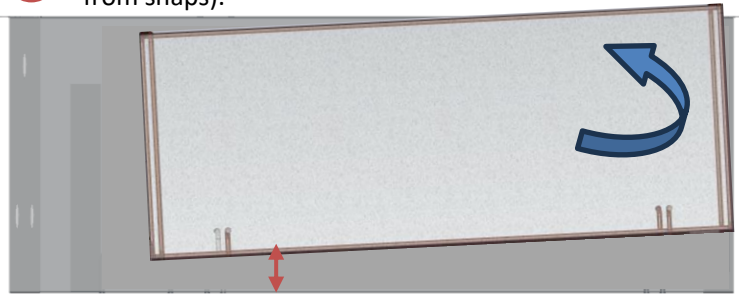


neutrakon®  
neutralisiert saure Kondensate

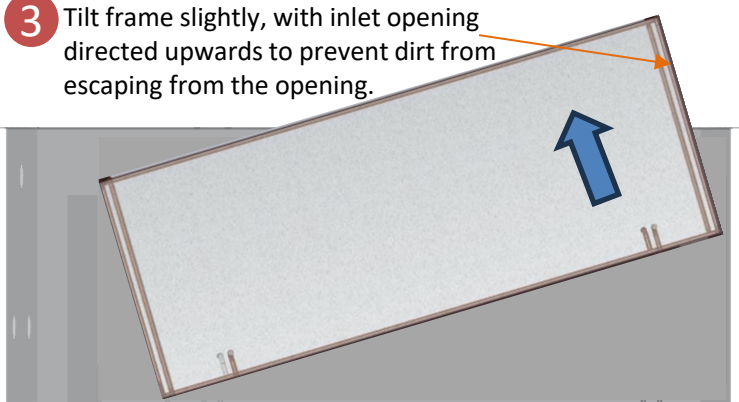
## 1 Frame in installed position



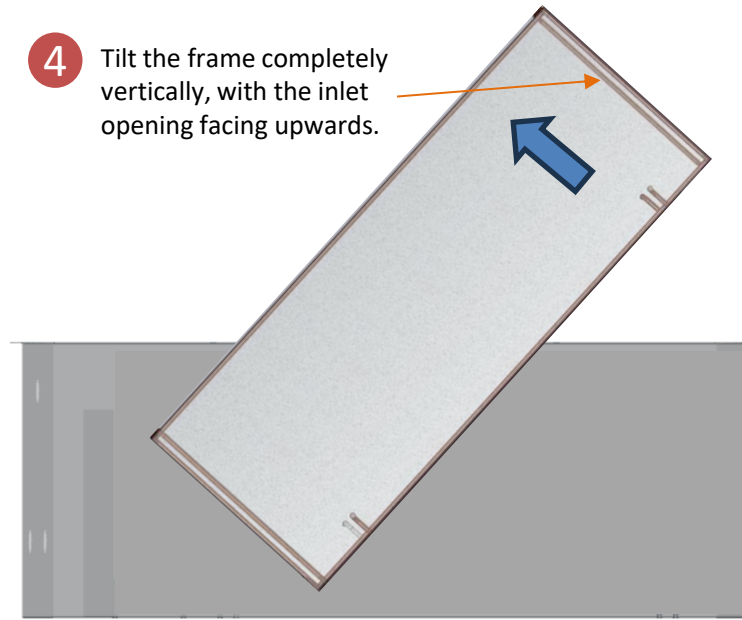
## 2 Pull the frame up slightly with a slight inclination (to release from snaps).



## 3 Tilt frame slightly, with inlet opening directed upwards to prevent dirt from escaping from the opening.



## 4 Tilt the frame completely vertically, with the inlet opening facing upwards.



## 5 Tilt the frame completely vertically, with the inlet opening facing upwards.

- Allow to drain
- Remove and discard filter bag
- Tighten the new filter bag onto the frame and rinse the housing if necessary.
- Finished!



# Neutrakon Pro DBS - Views

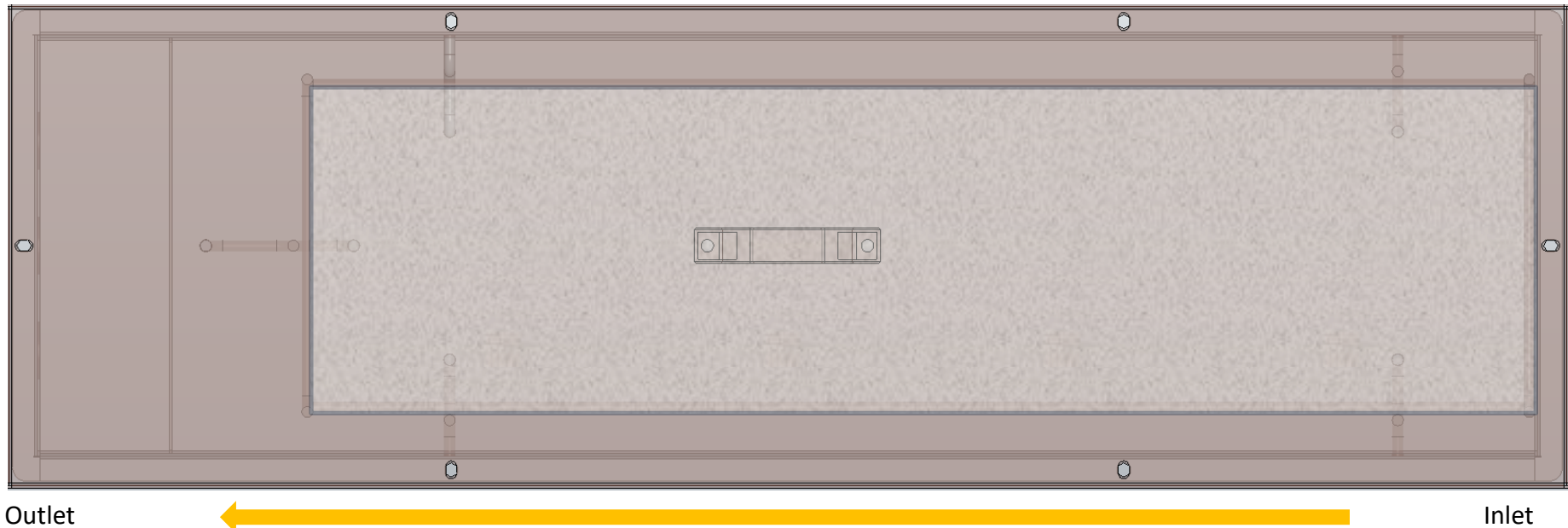


neutrakon®  
neutralisiert saure Kondensate

## Neutrakon Pro DBS

Overall perspective of the housing, frame, filter bag and lid.

*Bird's eye view*



# Neutrakon Pro DBS - Views

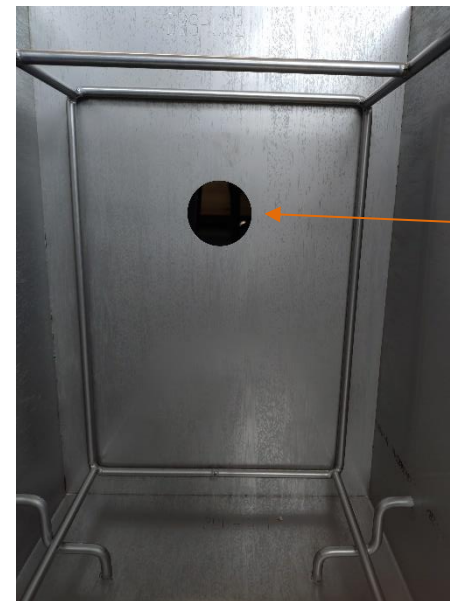
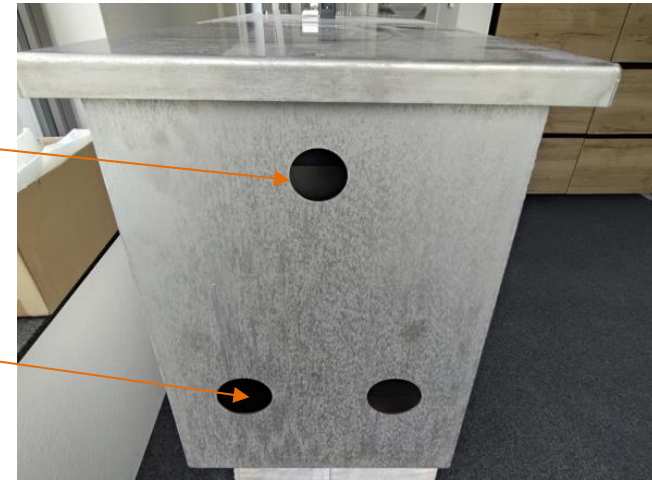


neutrakon®  
neutralisiert saure Kondensate



Emergency drain  
1 ¼"

2x outlet 1 ½"



inlet 1 ½"

# Neutrakon Pro DBS - Views



neutrakon®  
neutralisiert saure Kondensate



Prototyp



Prototyp

# Neutrakon Pro DBS – Test LD –light duty (100 g/m<sup>2</sup>)



neutrakon®  
neutralisiert saure Kondensate



Filter bag after removal from test operation.  
Traces of dirt can be seen all around. This means  
that the bag has filled up with water on all walls  
except for the top side.

# Neutrakon Pro DBS – Test HD – heavy duty (130 g/m<sup>2</sup>)



neutrakon®  
neutralisiert saure Kondensate



Filter bag after removal from test operation.  
Traces of dirt can be seen all around. This means that the  
bag had filled up with water on all walls.

# Neutrakon Pro DBS – Filter bags



**neutrakon**<sup>®</sup>  
neutralisiert saure Kondensate

Light Duty:



Heavy Duty:



Description	Quantity	Article number
100 g/m <sup>2</sup> , white, box cover with lid sewn in approx. 60 x 50 x 90 cm, hole with gym bag closure and cord	50	100301
	100	100302
	200	100303

Description	Quantity	Article number
130 g/m <sup>2</sup> - white, Box hood with lid sewn in approx. 60 x 50 x 90 cm, hole with gym bag closure and cord	50	100310
	100	100311
	200	100312

We recommend initially using the LD filter bag (100g/m<sup>2</sup>) and a close visual inspection in order to gain initial experience.

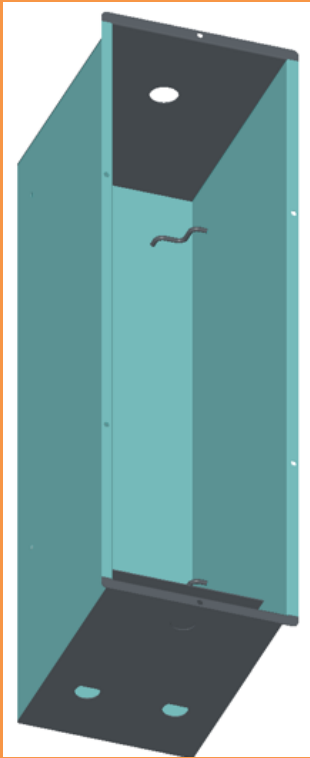
The HD (130g/m<sup>2</sup>) can be used at a later date and adapted specifically.

# Neutrakon Pro DBS – Delivery scope

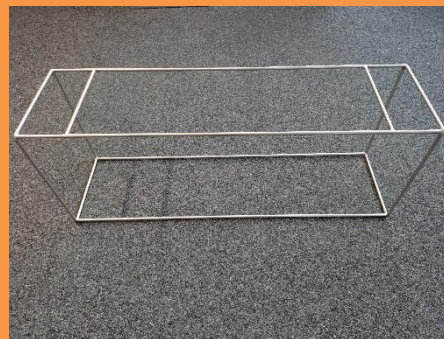


neutrakon®  
neutralisiert saure Kondensate

1x Housing



1x frame



6x Filter bags



3x LD (100 g/m<sup>2</sup>)



3x HD (130 g/m<sup>2</sup>)





# Technical Data Neutrakon Pro DBS



neutrakon®  
neutralisiert saure Kondensate

## Technische Daten

Suitable for	Filter for coarse dirt particles, residues, chimneys
Performance	11 MW
Max. flow rate (l/h)	1500
Housing/frame	Stainless steel V4A
Filter bag	LD 100g/m <sup>2</sup> oder HD 130 g/m <sup>2</sup>
Weight housing	25kg
Weight lid	7,5 kg
Weight frame	2kg
Total weight (housing, lid and frame)	34,5kg
Volume filter bag stretched on the frame (liters)	80 Liter
Area Filter bag (in m <sup>2</sup> )	0,81 m <sup>2</sup>
Dimensions (without connections)	Length 1137 mm; Width 350mm; Heigth 450mm
Dimensions (with connections)	Length 1185 mm; Width 450 mm; Heigth 450mm
Dimensions filter bag frame	Length 900 mm; Width 250 mm; Heigth 350mm
Connection inlet (1x)	1 ½" External thread (41,91mm-33,25mm)
Connection outlet (2x)	1 ½" External thread (47,81mm-41,91mm)
Connection emergency drain (1x)	1 ¼ "
Height (Inlet/ Outlet/ emergency drain)	280mm, 125mm ; 370mm
Maintenance tap (2x)	1"
Mommertz article number	097012

Can be combined with the Neutrakon Pro SN90 and SN60 neutralization system



neutrakon®  
neutralisiert saure Kondensate



# Neutrakon Pro DBS - contact person



neutrakon®  
neutralisiert saure Kondensate

## Sales contact:

Eugenio Furtado

Mommertz GmbH  
Lerchenweg 4  
89176 Asselfingen

Telefon +49/ 07345 2100 160

Mobil: + 49 (0) 176 238 23 538

E-Mail: [efurtado@mommertz.de](mailto:efurtado@mommertz.de)

[www.neutrakon.de](http://www.neutrakon.de)

[www.neutrakon.eu](http://www.neutrakon.eu)